



# CONEGENIE®

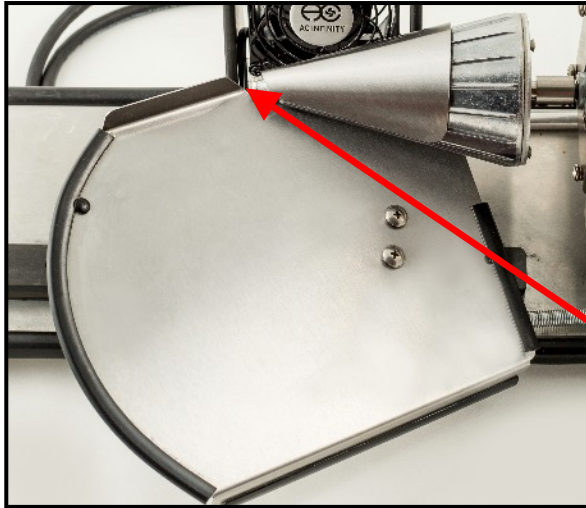
## INSTRUCTION SHEET

**Thank You for purchasing the Cone-Genie! We know you will be amazed at how fast & proficient the Cone Genie is. Please follow the below instructions to make your use as simple as possible!**

- 1: Find a convenient location to sit your Cone-Genie—close to your waffle maker.
- 2: Be sure the main control switch is turned to off.
- 3: Plug in the GFCI Plug into a nearby outlet.
- 4: Your unit is set to the normal run time of around 10 seconds. This can be adjusted up or down if needed. See instructions that follow for time adjustment.
- 5: Prepare your waffle cone & turn the Cone-Genie switch to AUTO.
- 6: Pass your hand over the top of the yellow photo sensor, which will activate the Cone-Genie.
- 7: As the Cone-Genie turns insert your flat waffle cone into the shaping area—follow the arrows. See next page for diagram.
- 8: Your cone should be pulled into the device and continue wrapping until the timer stops.
- 9: Slide the Shaping Tray to left—allowing room for you to remove the cone.
- 10: Prepare your next cone and make another!



# Waffle Cone Shaper



**INSERT / SLIDE**  
**FLAT WAFFLE**  
**CONE HERE**

**AIM POINT!**

The top-center of your cone must enter here!  
Too far left and your cone tip will be too long!  
Too far right and your cone will have a hole at the tip!

Shaper will automatically grab cone and pull it in. Let go as it begins to pull. The end tip of the cone should be closed and sealed well, as it turns. If there is an opening in the tip of the cone, be sure you are inserting the cone far enough to the left. After a few test cones you will easily see how the unit operates and shapes your cone.

---

## Spring Adjustment Screw



The cone table has tension on the shaper cone by use of the tension spring. Depending upon the type of batter/cone recipe being used, less tension may be needed. You can move the spring to the next screw position, located under the black hole plug--or to the 3<sup>rd</sup> foot post--where a lock nut has been provided. Adjust as necessary for your situation. **NORMALLY NO ADJUSTMENT IS NEEDED HERE!** TALK WITH US FIRST! Usually all adjustments for quality cone production are made with the Rail Lock.

# **TIMER / SENSOR**

## **ADJUSTMENT**

The Cone Genie® hand sensor time is adjustable. The range of timing is from 1-16 seconds. All adjustments are made from the front of the hand sensor—see picture below. The unit is tested and set prior to shipping. In most cases your time of operation—the run time—is set to 15-16 seconds.

You may want the run time shorter—so you can make more cones faster! **ALL ADJUSTMENTS TO REDUCE THE RUN TIME OF THE HAND SENSOR ARE MADE BY ADJUSTING THE “OFF DELAY”**. Off Delay means just that—how much we delay the timer before it shuts off! On-Delay means—how long we delay turning the unit “on” once we see your hand. Obviously—we want that at zero! **NOTE:** Normally you NEVER want to adjust the “ON DELAY” time.

Things to remember: **The OFF DELAY BUTTON is also the “-” or negative—down button. The ON DELAY BUTTON is also the “+” or up button.**

So, to adjust the OFF DELAY BUTTON—we would first push the OFF DELAY BUTTON ONCE—and then PUSH THE + BUTTON OR THE - BUTTON, TO INCREASE OR LOWER THE TIME. Remember, once you push the OFF OR ON DELAY BUTTON—you only have a few seconds to begin pushing the + or - button to adjust the time. If you take too long, it will just return to its normal operating state.

### **STEPS TO ADJUST THE RUN TIME**



- 1: Push OFF DELAY BUTTON ONCE;
- 2: Begin pushing the - button to decrease the run time or the + button to increase the run time.
- 3: The yellow light bar to the left will go up or down—showing you where you are in time, in the allowable range of 1 to 16 seconds. If the bar is fully lit—you are running at 16 seconds. If the bar is only lit at the bottom—you are running around 1 second or less
- 4: Repeatedly push the - or + to make the time increase up or down—and watch the bar indicate your time line.
- 5: When finished—just stop pushing! It will go back to the RUN mode automatically.

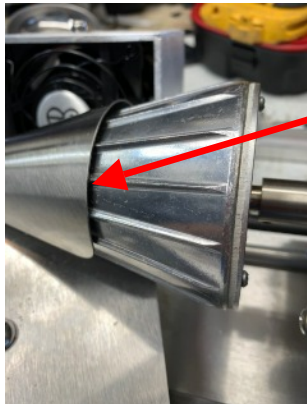
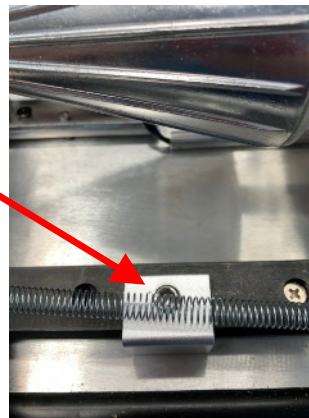
**YELLOW LIGHT BAR-TIME INDICATOR**

# ADJUSTABLE SLIDE LOCK

## INSTRUCTIONS

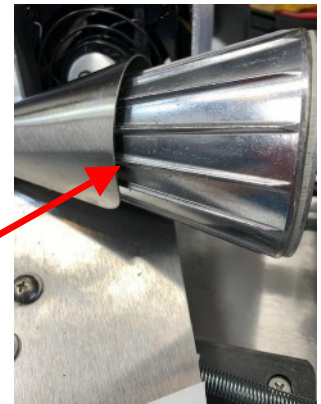
The Cone-Genie® now includes an adjustable slide lock. This allows a “minor” adjustment to the opening of the cone table and cone shaper. Due to the varying styles & viscosity of waffle cone recipes—we wanted an easy way to adjust the “bite” of the cone spindle and shaper. When adjusted will allow a “larger” gap between the spindle & shaper. **ONLY MAKE THIS ADJUSTMENT IF DIRECTED BY ABW INNOVATIONS!** In nearly 95% of uses--this is NOT needed. Call us for details or if you are having trouble with the Cone Genie® “grabbing” your cone.

**ADJUSTABLE SLIDE LOCK.** This can be “loosened” and placed to the “left”, which will make a larger gap between the cone shaper & spindle. LEAVE AS IS UNLESS DIRECTED TO MOVE IT BY ABW INNOVATIONS!



“GAP” AT ITS NORMAL OR FACTORY SHIPPED LOCATION.

“GAP” AFTER SLIDE LOCK HAS BEEN MOVED JUST SLIGHTLY TO THE LEFT. THIS LARGER GAP CAN AID SOME “THICKER” CONE RECIPES.

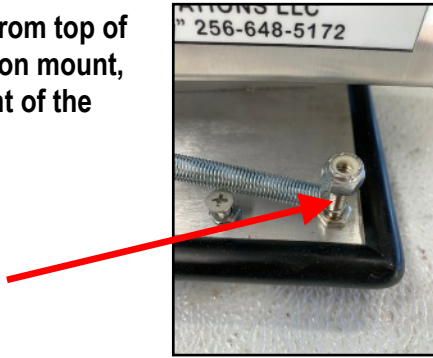


**PLEASE CALL OUR OFFICE IF YOU HAVE ANY QUESTIONS,  
OR ARE HAVING PROBLEMS MAKING YOUR CONES.  
WE ARE HERE TO HELP YOU!**

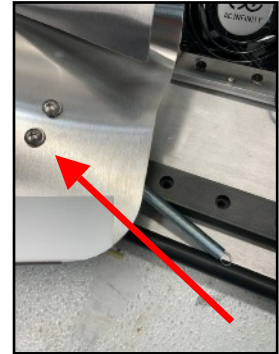
# SWAPPING THE CONE SHAPER INSTRUCTIONS

If you have purchased the “optional” second Cone Size Kit, please follow these directions to swap between the two different size cone shapers.

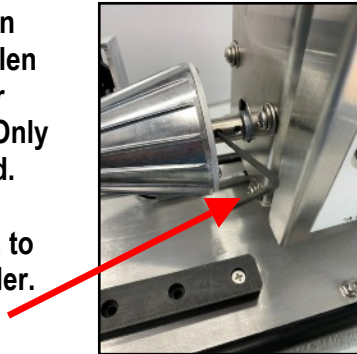
1. Remove nut from top of the spring tension mount, on the right front of the Cone-Genie®



2. Slide cone shaper to the left, down the rail, so the unit is out of the way. Then remove the two Phillips head screws in the shaper plate and set plate aside.



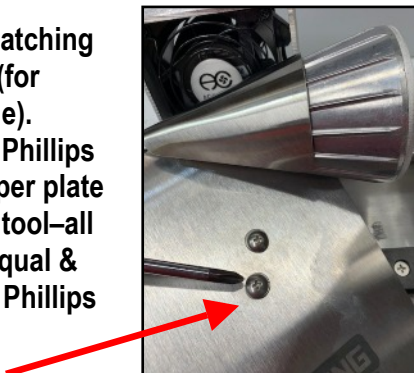
3. Insert supplied Allen Wrench into the left Allen Nut, turning to counter clockwise to loosen. Only a turn or two is needed. Then pull front cone shaper tool, to the left, to remove from the coupler.



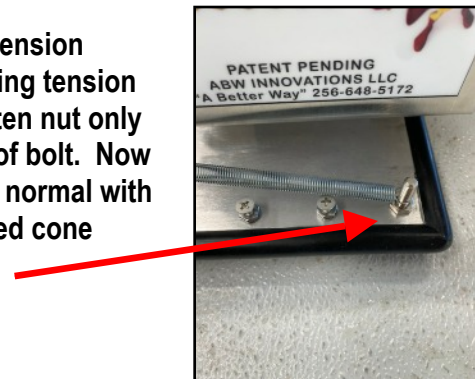
4. Insert the desired cone shaper (small or large) and insert into the coupler firmly. Re-tighten allen screw tightly, use pliers if required.



5. Reinstall the matching size shaper plate (for small or large cone). Before tightening Phillips screws, align shaper plate over cone shaper tool—all sides should be equal & centered. Tighten Phillips screws.



6. Reattach tension spring to spring tension mount. Tighten nut only to cover top of bolt. Now run cones as normal with your new sized cone shaper.



145 Kualapa Place Lahaina, HI 96761  
(256) 648-5172  
[www.abw-innovtations.com](http://www.abw-innovtations.com)

## SPECIFICATIONS:

**Dimensions:** Approximately 21"W x 6" D x 9" H

**Weight:** Approximately 16 pounds

**Materials:** Aluminum & Stainless Main Components

**Voltage/Amps:** 115 VAC / >2.0 Amps